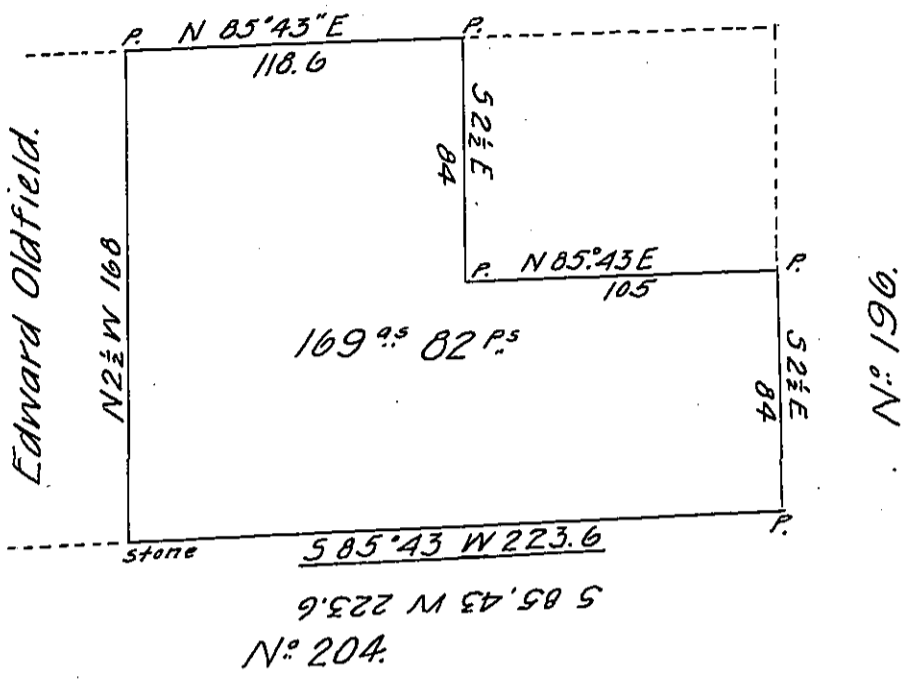


N^o 206



A Draught of a part of a tract N^o 205 in the tenth District of Donation lands in Waterford Township Erie County Surveyed the 20th day of November 1863 for Jane M^o Lenahan by virtue of the actual settlement residence and improvement of Edward Oldfield containing one hundred and Sixty nine acres & 82 perches & allowance of Six per cent for Roads &c.

W^m Benson.
County Surveyor.

To Hon. Henry Souther }
Surveyor General }

IN TESTIMONY that the above is a copy of the original remaining on file in the Department of Internal Affairs of Pennsylvania, made conformably to an Act of Assembly approved the 16th day of February, 1833, I have hereunto set my Hand and caused the Seal of said Department to be affixed at Harrisburg, this sixth day of March 1906.

George P. Brown
Secretary of Internal Affairs.